



# Set Your Team's Sights on Ace Performance with edgeCore™

---

ebook



# Contents

**01**

Amplify the impact of your  
company's business heroes

**05**

In your business, every  
input matters

**02**

edgeCore codifies  
hero-level skills

**06**

edgeCore conforms to  
your situation

**03**

Why should you embrace the  
edgeCore experience?

**07**

Everyday work, completed more  
confidently and competently

**04**

Inside edgeCore:  
What it does

**08**

A lasting relationship  
with easy evolution

# Amplify the impact of your company's business heroes

---

When someone rises to the level of heroic performance, it's because they have years of knowledge and experience, combined with the necessary skills to improvise, make decisions and take action. They have learned which inputs are valuable and which are simply "noise."

Think of the way "Sully" Sullenberger safely downed his plane in the Hudson River when its engines failed shortly after takeoff in 2009. His handling of the situation saved all 155 lives aboard, as well as countless more on the ground.

**▯▯ Your company has its own top performing heroes. Imagine the impact on your business if you could codify their knowledge and experience in a form your entire team could leverage.**

You need a way to impart the behavioral, performance and technological approaches of your best and brightest on the whole team, enabling confident decisions and action.

You need edgeCore.



# edgeCore codifies hero-level skills

The top performers at your company know what technologies are relevant, which dashboards to consult when, and what workflows are most suitable for the situation at hand. This is no small feat in a tech landscape that has become overwhelmingly complex. Identifying real-time actionable insights often requires evaluating between ten and twenty disparate solutions.

What if, instead of navigating a complex data environment without a map, your less experienced workers had a contextualized, simplified view codified by your best and brightest? In this view, they see only data elements that matter to them.

## Consider the leading factors that technologists view as complicating their IT stacks<sup>1</sup>:



Changing departmental priorities (80%)



Patchworked, sprawling legacy and cloud tech (78%)



Cloud adoption acceleration (77%)



Disconnected monitoring (74%)

This is what the edgeCore experience delivers: A way to upskill your whole team to contribute at a heroic level.



# Why should you embrace the edgeCore experience?

---



**When your organization uses complex systems, your top performers need an easy way to make their expertise accessible to others.**

Data volumes are rising, and almost one-third of that data has valuable information that can drive decision-making and action — but only if the insights are extracted correctly.<sup>2</sup> When your top performers create custom work experiences within edgeCore, they replicate the conditions under which they've found diamonds in the rough of the data landscape.

Once your workers have used these custom experiences, making the right moves every day, they start to build confidence and critical thinking, setting them up to be the next generation of business heroes.

Even if your current top performers leave the organization, their expertise will live on in the experiences they create and the colleagues empowered by their workflows.

# Inside edgeCore: What it does

---

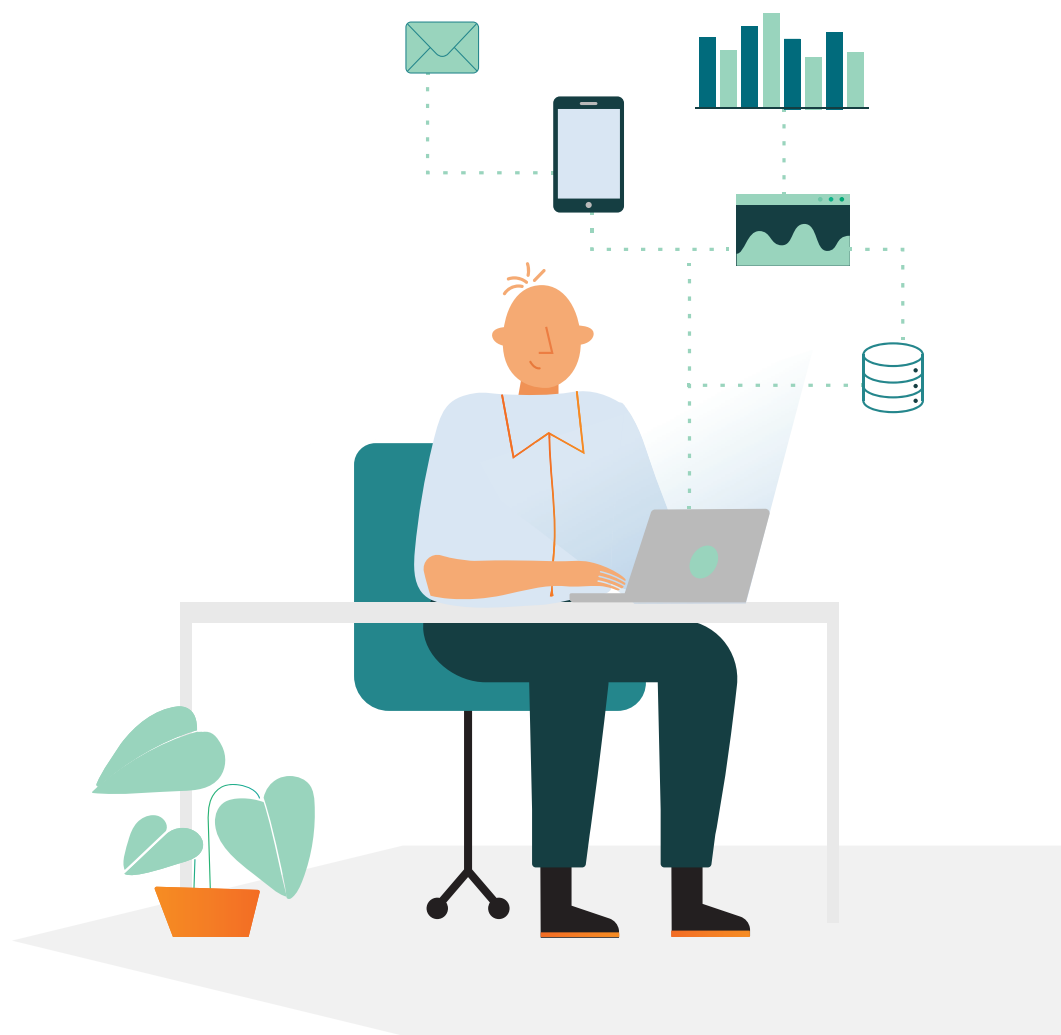
What makes edgeCore a transformative part of your technology stack rather than simply another dashboard? It works bidirectionally, in real-time, with every application, data source and platform in your company, alongside third-party data sources that deliver essential context.

Bidirectional interactivity, both viewing dashboards and using app interfaces, lets users translate data into insights — and insights into action, leading to competitive advantage.

Your top employees don't just use dashboards. They use:

- The most relevant input from every kind of internal technology and dashboard
- External data, such as logistics and weather updates, to provide a “power multiplier” to the internal info

Heroic performers thrive on context, and through “context engineering”, they weave their thought processes into the main views rank-and-file employees use daily. With edgeCore, the view is a context-rich environment that allows immediate secure actions in your existing applications — all within an integrated experience.



# In your business, every input matters



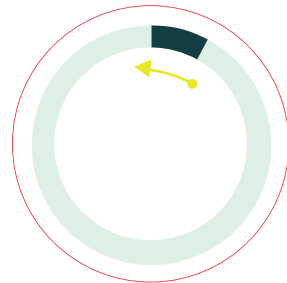
Organizations today are faced with many sources of potentially insight-laden information. Just like the instruments in an airplane cockpit, each one has its role to play — knowing when to consult a given source comes from years of experience and training, and this is the ability the edgeCore experience passes on to users.

## The edgeCore experience cuts through the noise, giving your team:

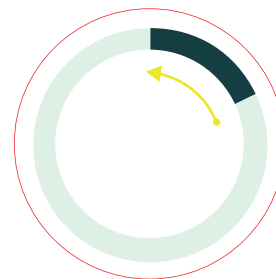
- Input that matches their mission and current need
- Data environments devised by your top performers
- Strict access control by role
- Context based on employees' personal objectives

## The edgeCore experience does not require your team to:

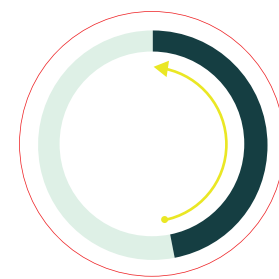
- Replace any of your current solutions
- Create another expensive data warehouse or data lake
- Install any client-side applications
- Train in any proprietary skills for deployment



Only 6% of companies work from a single source of data truth



18% consult 20+ internal sources of data



47% see their internal data sources increasing — only 9% decreasing<sup>3</sup>

# edgeCore conforms to your situation

---



**One of the factors making edgeCore uniquely valuable is that the technology works with the myriad of systems you use now — and those you will acquire in the future.**

Rather than giving users a two-dimensional representation of data that only allows drilling down within a model, edgeCore uses context to place the right data and interfaces to match the situation.

It is more interactive than an aggregated dashboard and more flexible than systems from software providers that claim to be all-in-one platforms. With edgeCore, you'll discover that there's:

- No need to rip and replace tools that are providing value
- No limitations on the solutions you can add to your environment

Your top performers can pass their workflows on in a 1:1 fashion. The exact tools they use are the ones included in the edgeCore experience.



# Everyday work, completed more confidently and competently

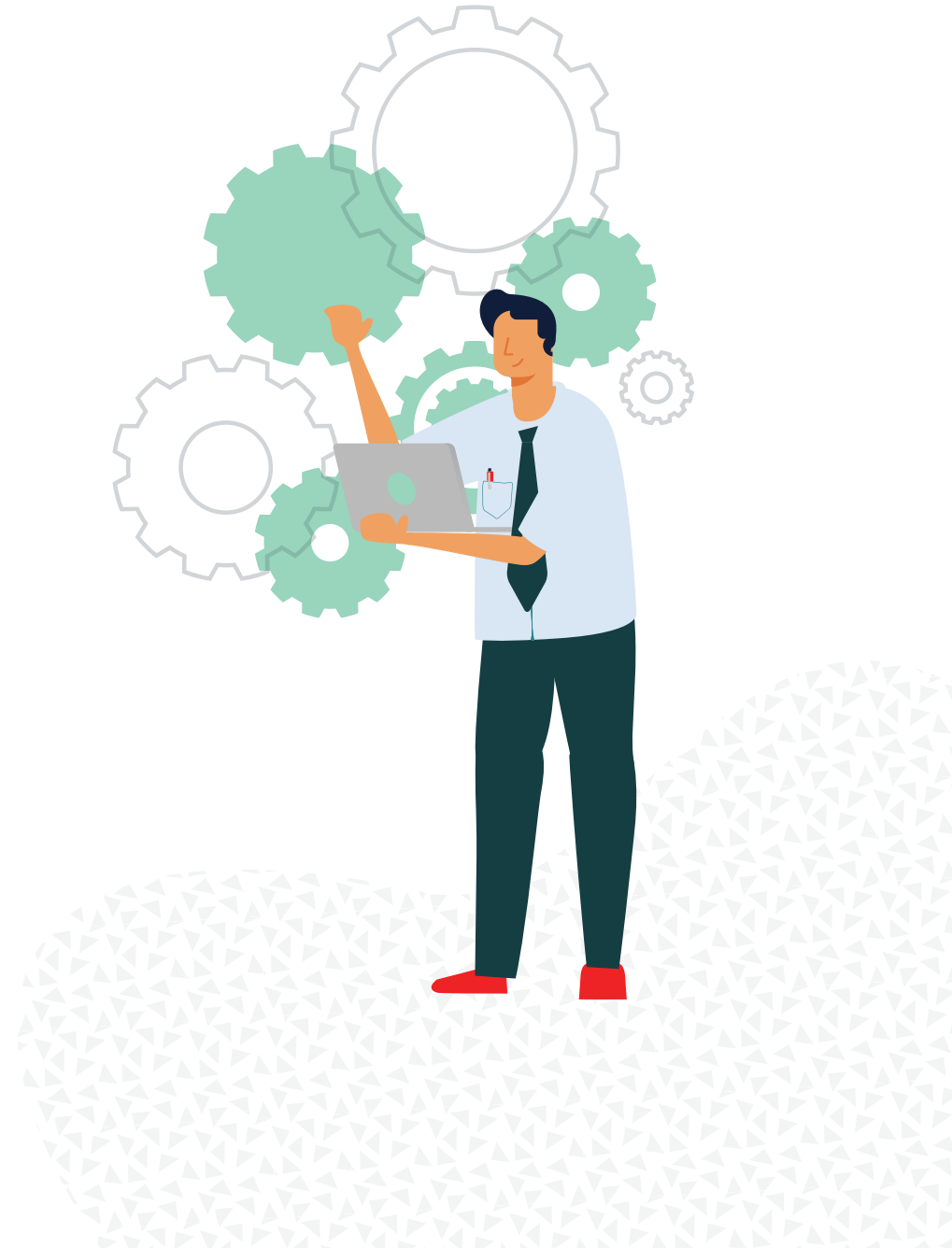
---

Imagine how productive your company could be with confident, experienced professionals making decisions and taking action throughout every department. When best practices and workflows are inspired by your heroic performers, every role is piloted with the expertise of a “Sully.”

The customized, context-laden edgeCore experiences used by your team are designed to eliminate, automate and streamline the repetitive tasks that get in their way, leaving them more room and ability to get high-value work done.

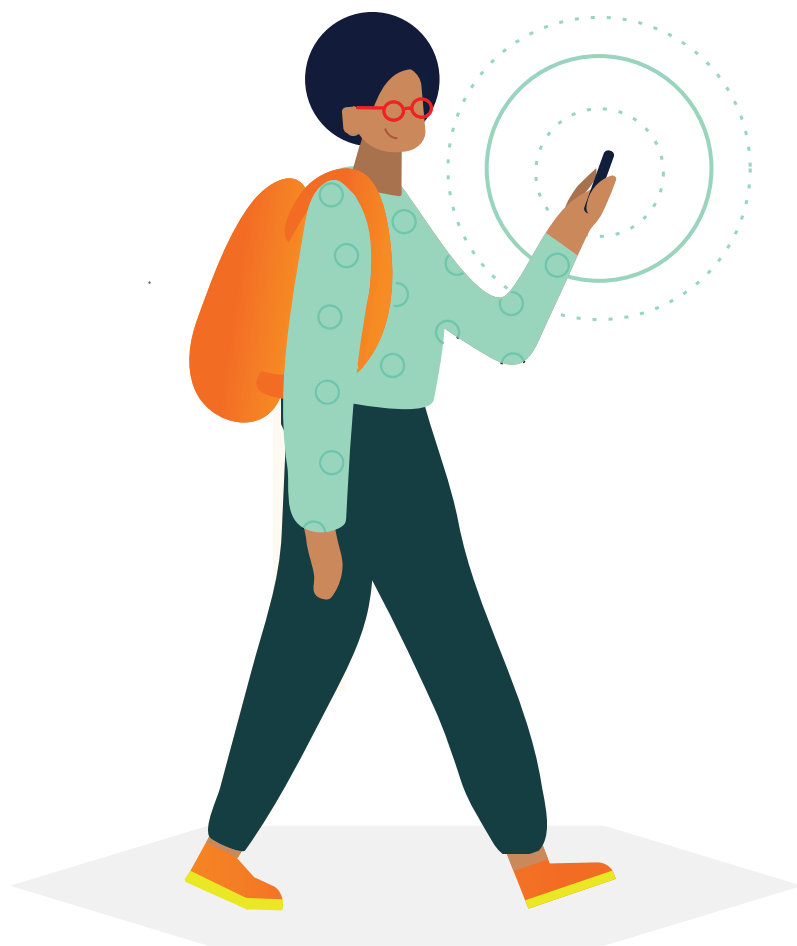
The combination of best-practice codification and everyday task optimization is the heart of edgeCore’s ROI. Workers are poised to succeed under everyday or unexpected circumstances.

When you onboard new employees into an edgeCore experience, it’s quick to get them to a level where they are strategizing, making decisions and taking action with confidence. You can also upskill workers quickly.



## A lasting relationship with easy evolution

---



**/// Your company's needs will inevitably evolve over time. Since edgeCore easily changes and expands, it's simple to keep getting experiences that work for your team and contribute to reaching your unique objectives.**

In its ability to incorporate new internal and external applications and data sources, edgeCore is more suited for long-term use than a software platform that claims to be an all-in-one solution. Tethering yourself to one set of tools runs the risk of obsolescence — edgeCore, by contrast, can evolve with you.

It's time to turn the ever-evolving, results-driven workstyles of your "Sully"-level employees into repeatable, codified workflows for the rest of the team. Today, tomorrow and for years to come, these new experiences point to value.



**Request a demo** to see exactly how edgeCore fits into your organization.



<https://edgeti.com>

